

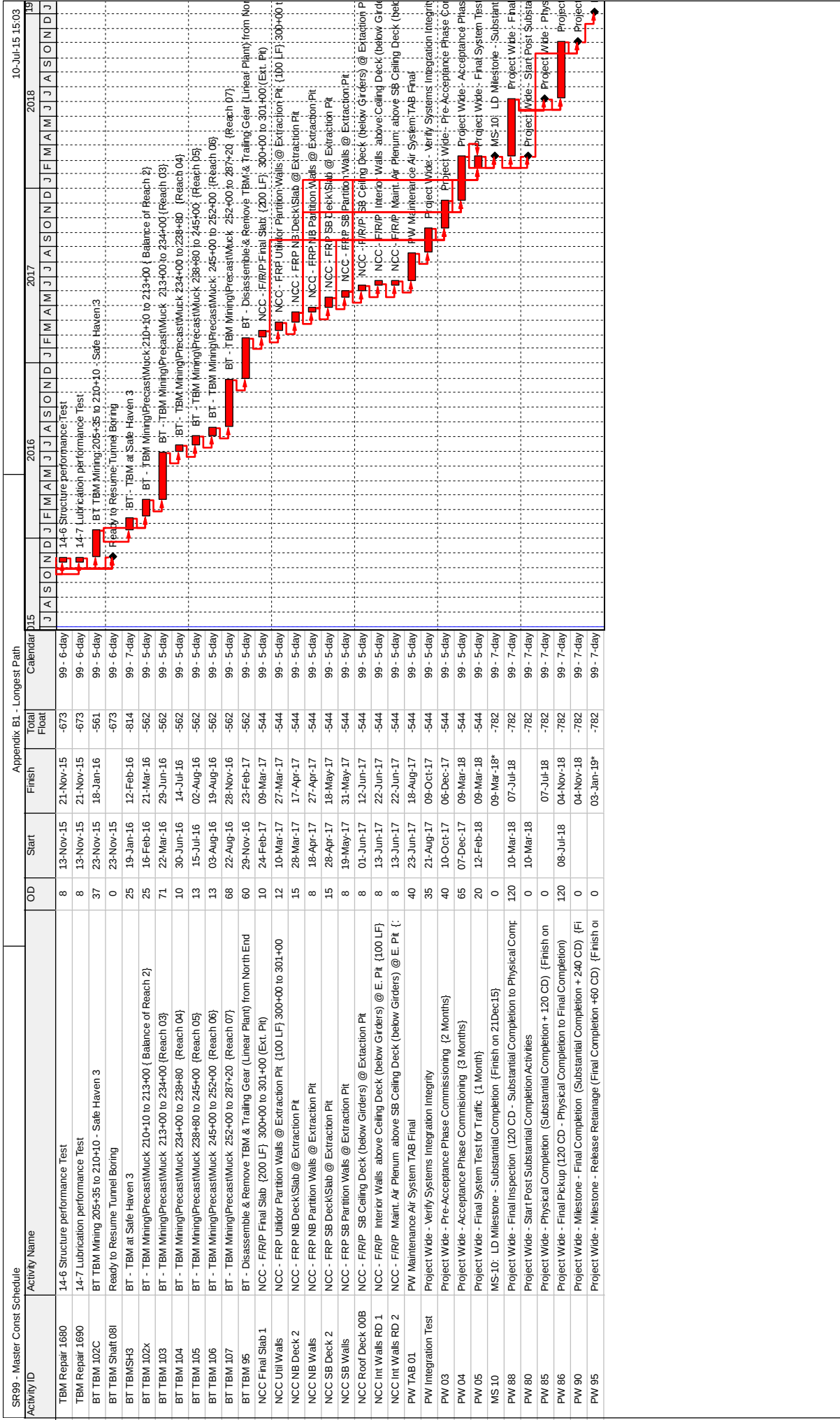
SR99 - Master Const Schedule		Appendix B1 - Longest Path																																							
Activity/ID	Activity Name	OD	Start	Finish	Total Float	Calendar																																			
						15	2016					2017					2018																								
						J	A	S	O	N	D	J	F	M	A	M	J	J	F	M	A	M	J	J	A	S	O	N	D	J	F	M	A	M	J	J	A	S	O	N	D
TBM Repair 837F	4-18-6 Machining Inner C. Agitator Outer Seals Sliding Surface (J)	3	01-Jul-15	04-Jul-15	-673	J	A	S	O	N	D	J	F	M	A	M	J	J	F	M	A	M	J	J	A	S	O	N	D	J	F	M	A	M	J	J	A	S	O	N	D
TBM Repair 837H	4-18-8 Machining Spigt Agitator Bearing Surface (H)	2	06-Jul-15	07-Jul-15	-673																																				
TBM Repair 837I	4-18-9 Machining Agitator Bearing Mounting Surface (F)(G)	4	08-Jul-15	11-Jul-15	-673																																				
TBM Repair 950	6-14. Install the Inner Cylinder to the Agitator	2	10-Jul-15	11-Jul-15	-673																																				
TBM Repair 960	6-15. Install the agitator Motors and Center Pipe Fixed Side	2	13-Jul-15	14-Jul-15	-673																																				
TBM Repair 1230	6-16. Remounting Grease Distribution, Hosing and Wiring IC	10	15-Jul-15	25-Jul-15	-673																																				
TBM Repair 915	6-17. Install the Agitator and Inner Cylinder to the Cutter Column	2	27-Jul-15	28-Jul-15	-673																																				
TBM Repair 970	6-18. Welding Inner Seal Labyrinth	3	29-Jul-15	31-Jul-15	-673																																				
TBM Repair 978	6-23. Install the Bearing Block to the Cutter Column	3	01-Aug-15	04-Aug-15	-673																																				
TBM Repair 979	6-24. Install the Cutter Motors to the Bearing Block	3	05-Aug-15	07-Aug-15	-673																																				
TBM Repair 973	6-19. Extending Agitator Blades	3	05-Aug-15	07-Aug-15	-673																																				
TBM Repair 981	7-0. Modification of the Oil-less Plates and Installation	3	05-Aug-15	07-Aug-15	-673																																				
TBM Repair 980	7-1. Lifting up CDU and Turn Over	1	08-Aug-15	08-Aug-15	-673																																				
TBM Repair 985	7-2. Lowering CDU and Install the TBM	3	08-Aug-15	11-Aug-15	-673																																				
TBM Repair 990	7-3. Installing the Scaffolding for Removing CDU Trunnions	1	08-Aug-15	08-Aug-15	-673																																				
TBM Repair 995	7-4. Welding the Detent Beam	1	10-Aug-15	10-Aug-15	-673																																				
TBM Repair 1000	7-5. Removing CDU Trunnions	3	11-Aug-15	13-Aug-15	-673																																				
TBM Repair 1010	7-7. Lowering the Left Side Passageway	1	14-Aug-15	14-Aug-15	-673																																				
TBM Repair 1003	7-8. Lowering the Left and Right Side Front Body	2	14-Aug-15	15-Aug-15	-673																																				
TBM Repair 1006	7-9. Lowering the Top Side Passageway	1	15-Aug-15	15-Aug-15	-673																																				
TBM Repair 1009	7-10. Lowering the Top Side Front Body and Install to TBM	2	17-Aug-15	18-Aug-15	-673																																				
TBM Repair 1025	8-3. Restoration of the Working Deck	6	19-Aug-15	25-Aug-15	-673																																				
TBM Repair 1110	8-12. Welding the Repair Structure of the Middle Body	12	26-Aug-15	09-Sep-15	-673																																				
TBM Repair 1130	8-14. Fixing of the Front Body and the Bearing Block Front	3	10-Sep-15	12-Sep-15	-673																																				
TBM Repair 1160	8-17. Restoration of the Hoses and Pipes	15	10-Sep-15	26-Sep-15	-673																																				
TBM Repair 1165	8-18. Restoration of the Cables	15	10-Sep-15	26-Sep-15	-673																																				
TBM Repair 1140	8-15. Fixing of the Front Body and the Bearing Block Middle	3	14-Sep-15	16-Sep-15	-673																																				
TBM Repair 1150	8-16. Fixing of the Front Body Chamber and the Seal Ring	3	17-Sep-15	19-Sep-15	-673																																				
TBM Repair 1175	8-20. Removing the New Seal Ring Support Beam	3	21-Sep-15	23-Sep-15	-673																																				
TBM Repair 1180	8-21. Removing the Scaffolding and the Working Stage	5	22-Sep-15	26-Sep-15	-673																																				
TBM Repair 1520	11-1. Front Body Measurements	1	28-Sep-15	28-Sep-15	-673																																				
TBM Repair 1530	11-2. Seals Gaps Measurements	1	29-Sep-15	29-Sep-15	-673																																				
TBM Repair 1540	11-3. Cutter Head Measurements	1	30-Sep-15	30-Sep-15	-673																																				
TBM Repair 1550	12-1. Center Agitator Performance Test	2	01-Oct-15	02-Oct-15	-673																																				
TBM Repair 1560	12-2 Over Cut Equipment Performance Test	2	03-Oct-15	05-Oct-15	-673																																				
TBM Repair 1570	12-3 Foam and Polymer Injection Performance Test	4	06-Oct-15	09-Oct-15	-673																																				
TBM Repair 1580	12-4 High Pressure Water Injection Equipment Performance Test	2	10-Oct-15	12-Oct-15	-673																																				
TBM Repair 1590	12-5 Bentonite Injection and Refill Equipment Performance Test	2	13-Oct-15	14-Oct-15	-673																																				
TBM Repair 1620	12-8 Cutter Equipment Performance Test	5	15-Oct-15	20-Oct-15	-673																																				
BT TBM Shaft 08H1	13-1 Cradle backfill. Gavel and CDF	4	21-Oct-15	24-Oct-15	-673																																				
BT TBM Shaft 08H2	13-2 Backfill 4' above TBM crown	10	26-Oct-15	05-Nov-15	-673																																				
BT TBM Shaft 08H3	13-3 Backfill up to EL+16	6	06-Nov-15	12-Nov-15	-673																																				
TBM Repair 1630	14-1 Center Agitator Performance Test	8	13-Nov-15	21-Nov-15	-673																																				
TBM Repair 1640	14-2 Cutter Equipment Performance Test	8	13-Nov-15	21-Nov-15	-673																																				
TBM Repair 1650	14-3 Impulsion Equipment Performance Test	8	13-Nov-15	21-Nov-15	-673																																				
TBM Repair 1660	14-4 Foam Injection Performance Test	8	13-Nov-15	21-Nov-15	-673																																				
TBM Repair 1670	14-5 Cooling Water System Performance Test	8	13-Nov-15	21-Nov-15	-673																																				

Actual Work █ Remaining Work █ Critical Remaining Work █ Milestone ◆

TASK filter: Longest Path.

Page 1 of 2

© Oracle Corporation



Legend:

- Actual Work
- Remaining Work
- Critical Remaining Work
- Milestone

TASK filter: Longest Path.

Page 2 of 2

© Oracle Corporation